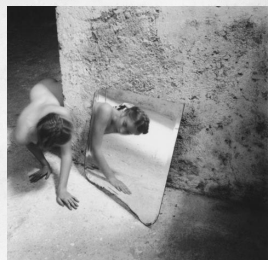


# MONA PROJECT

For this project I wanted to explore elements of mystery and reflections. I was inspired by Francesca Woodman's photography as she often uses these in her work.

## Francesca Woodman 1958-1981

contrast - shadows/light



Self-deceit #1  
Rome, Italy  
Francesca Woodman  
1978  
Photograph

Black and white

Textured wall  
organic?

Silhouette on the floor

Decayed environment



Untitled  
Providence, Rhode Island,  
Francesca Woodman  
1976  
Photograph, gelatin silver print on paper  
Dimensions: 143 x 144 mm

sitting

Hidden but shown

Mirror

She is an aesthetic feature of her photography

Femininity?

nudity

clothing can show status/style

↳ being naked is being exposed but also mysterious?

Simple room

half naked

Mysterious

Mirror

ghost shadow

she is the subject

Shy exposed

Looking into the camera

Difference between body and mind

Figure Movement

Simple room

Mysterious

Mirror

ghost shadow



Space,  
Providence, Rhode Island,  
1975-1978  
Francesca Woodman  
Date: 1975-8  
Medium:  
Photograph, gelatin silver print on paper  
image: 140 x 140 mm

Francesca woodman is most well known for her photography mainly featuring herself or other female models.

Her work:

- Black and white photos
- Nude models
- Mirrors
- Shadows

### Picture 1: Self-Deceit #1

The idea of showing identity through the use of mirrors.

The face is only seen through a mirror.

Creates distance.

I enjoy her composition and interesting setups. Strong connection between image in the mirror and what we can actually see.

The focal point is her face which is in the centre of the photo.

## Taking photos:

I wanted to do something similar to Francesca Woodman so I experimented with this mirror and some other objects (such as the carpet and sunglasses)

Contrast between the patterns on the rug and the reflection of the white ceiling



Connection between reality and reflection makes the audience understand that they are seeing a reflection



Hiding using mirror



Mirror: To look at one self: self-image

### Sunglasses

- a further way of hiding oneself - mystery



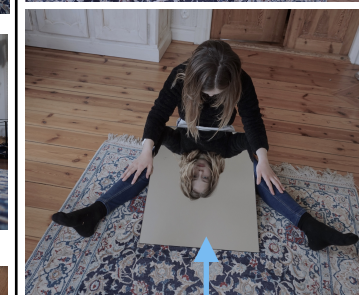
The model is my cousin who posed with a mirror and different objects. We worked together deciding her pose. I was aiming to create and test out different effects using a mirror. It was interesting to create these different compositions using reflections.

## Favourite photos

- Most interesting and
- Making the picture colder by turning down the saturation



Face only seen through mirror - similar to Francesca Woodman



I tried to line up the edges of the rug to further the illusion that there is nothing there

Hint of ceiling - Showing a different perspective of the room

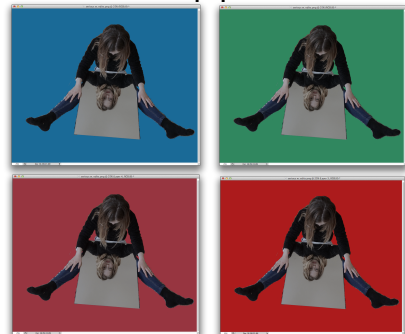
### Identity and self-esteem



I chose to focus on this image because it had a stronger emotion behind it. She is sitting on the floor looking through the

mirror into the camera. Her face can only be seen through a mirror - causes distance. Pose is relaxed, look is serious. Although the mirror causes distance, the model looks straight at the viewer which still causes a strange connection between the subject and audience.

## Photoshopped Backgrounds



I decided not to include the background in the picture I took because it would take away focus from the subject and a less crowded background adds to the mood I was aiming to achieve. Allowing for more focus on the subject.

Testing out different coloured backgrounds



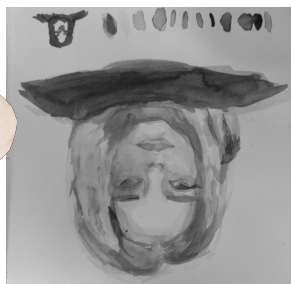
Pastel blue:

- Not a very strong colour
- Calm and cold
- Matches the blue pants and eyes
- Works well with the less vibrant image

## Practicing Painting the Face



Ink painting upside down



Acrylic painting upside down



Original image



The size of the painting is about 1\*1 meters. It is quite a large painting, the largest I have ever painted. It was a challenge but it also allowed me to add more detail to the face. It also makes the painting more life-size and more realistic.

It is a little strange and mysterious: We are used to looking directly into peoples eyes, the mirror creates distance between the audience and the subject. Very personal.

I think I succeeded in creating something similar to Francesca Woodman. Although she used a different medium and palette (b&w) I believe my painting has a similar element of mystery and close connection between audience and subject.

# RESOLVED WORK: *Mona*

100 x 100 cm  
Oil paint on canvas

